



**20-5002**

Alu-vinkel på karm for anslag/hængelås.  
Alu angle on frame for stop/padlock fitting.



**26-0010**

Gummiprop for endestop 20x20 mm.  
Rubber stop 20x20 mm.



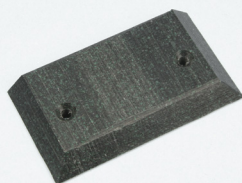
**26-1020**

Gummiprop for endestop 39x32 mm.  
Rubber stop 39x32 mm.



**26-1230**

Koblingsbolt.  
Coupling bolt.



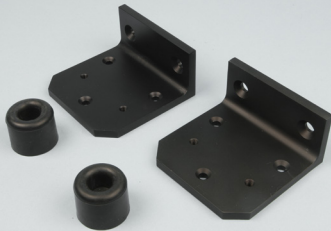
**26-3060**

Anslagsklods på karm for cylinderlås.  
Stop block for frame on cylinder lock.

# DAN-matic reservedele | Spare parts

Låse til skydedøre  
Locks for sliding doors

**DAN-doors**   
INTELLIGENT SOLUTIONS



## 30-4049

Anslagsvinkler TDB1 / DAN-matic.  
Angle TDB1 / DAN-matic.



## 30-4051

Anslagsvinkel for hængelås TBD1.  
Angle for padlock TBD1.



## 37-4210

Mellemlæg for cylinderlås 10 mm.  
Piece for cylinder lock 10 mm.



## 37-4220

Mellemlæg for cylinderlås 20 mm.  
Piece for cylinder lock 20 mm.



## 37-4310

Cylinderlås alene f/40-50-60 mm dørblad.  
Cylinder lock for 40-50-60 mm door leaf.

# DAN-matic reservedele | Spare parts

Låse til skydedøre  
Locks for sliding doors



## 37-4325

Cylinderlås for 80 mm dørblad.  
Cylinder lock for 80 mm door leaf.



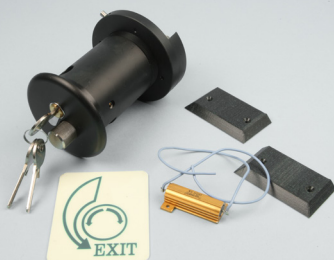
## 37-4330

Cylinderlås alene f/100 mm dørblad.  
Cylinder lock for 100 mm door leaf



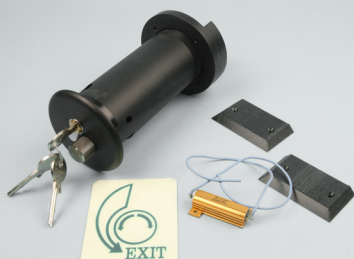
## 37-4350

Cylinderlås alene f/150 mm dørblad.  
Cylinder lock for 150 mm door leaf



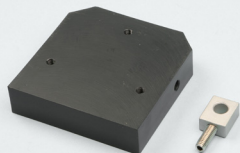
## 37-4535

Cylinderlås 100 mm med varme.  
Cylinder lock 100 mm with heating.



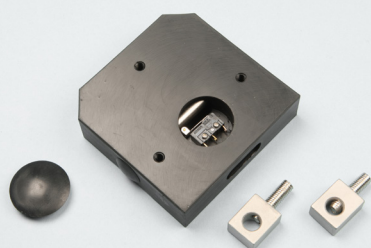
## 37-4550

Cylinderlås 150 mm med varme.  
Cylinder lock 150 mm with heating.



## 37-7111

Hængelåsbeslagshus til 1-fl. manuel.  
Padlock fitting house for 1-lf. manual.



## 37-7113

Hængelåsbeslagshus til 1-fl. automatisk - karmdel  
Padlock fitting house for 1-lf. automatic - frame



## 37-7114

Hængelåsbeslag / dørbladsdel - manuel/automatisk  
Padlock fitting / door leaf part - manual/automatic



## 37-8510

Flange hængelåsbeslag 2-fl.  
Flange padlock fitting 2-lf.



## 37-8514

Rigel for hængelåsbeslag BS60.  
Fitting bolt for padlock fitting BS60.



## 37-8518

Slutmuffe for hængelåsbeslag med nød TE 2-fl.

Cap for padlockfitting with emergency TE 2-lf.



## 37-8600

Nøddulser Type E 2-fl.

Emergency release Type E 2-lf.



## 59-2005

Omron kontakt SS5GL2

Switch Omron SS5GL2